

THE LISTER HOSPITAL

Issue 5 Spring 2009

- NEWS -



Renewal works completed on schedule

The new welcome desk at The Lister Hospital

The biggest expansion and refurbishment programme at The Lister Hospital since the hospital opened has been completed on time and on budget.

The £9 million programme, which is designed to improve both patient and medical facilities, was begun following a wide-ranging review of facilities and has included a reconfiguration of much of the hospital. It comes in addition to a major upgrading of The Lister's diagnostic facilities which included a new MRI.

All floors and the reception of the hospital have been refurbished with all rooms being refitted with new bathrooms and equipment. The hospital's orthopaedic floor is one of the best equipped in the country with specially designed rooms and wet rooms to aid the rehabilitation of patients who have undergone complex operations. Two new rooms have been added to the unit in recent months bringing the number of orthopaedic rooms to 14, with a further 2 planned.

The hospital has a new Enhanced Care Unit and the Fertility Clinic has been almost doubled in size (see inside pages). The pharmacy has been moved to the ground floor to make it more accessible for patients. Theatres have undergone a major equipment upgrade partly following

the increase in complex orthopaedic procedures being carried out.

Hospital Director James Barr said the completion of the work was a milestone in the development of the hospital. "We asked our patients, doctors and staff what improvements they would like to see and have made many changes directly as a result of this consultation," he said. "We have improved the capabilities of the hospital so that we can serve our local community better and give patients faster access to the highest standards of care.

"We have placed great emphasis on trying to help GPs arrange faster access to our services in recent years and now we hope patients will have an easier and less stressful experience when they come here, whether it be for a day procedure or for a longer stay," said Mr Barr.

"The relationship with local GPs and patients has also been strengthened by the recent opening of the Chelsea Consulting Rooms. Patients and doctors alike have commented on the ease of referral into the Lister".

"I would like to thank our patients, doctors and staff for their patience during this two-year period while work has been going on," he said.

Partnership with the NHS

The Lister Hospital is continuing to assist neighbouring hospitals with a number of NHS patients being treated for a variety of conditions.

More than 40 patients have undergone operations such as hip replacements, hernias, and other general surgical procedures since last Christmas following the waiting list support treatments carried out at The Lister last year.

Hospital Director James Barr said The Lister was committed to supporting the local community in whichever way it could. "We have long had a working relationship with neighbouring NHS hospitals including the Chelsea and Westminster and we are privileged to be helping the efforts to speed up service to the community," he said.

In this issue:

- Fertility Clinic expansion
- Enhanced Care Unit
- Foot and ankle service grows
- Pre-assessment benefits
- New book for cancer patients

The Lister Fertility Clinic expands

A major expansion of The Lister Fertility Clinic, which will almost double its size and mean state-of-the-art new facilities, is nearing completion. In all, the expansion and installation of state-of-the-art equipment will cost almost £3.5 million.

The Lister Fertility Clinic, which opened in 1988 and which currently completes two thousand cycles each year, had reached capacity and did not have the space and resources to meet the increasing demand for its services.

The largest in the UK, the Clinic has long had an international reputation for caring for every age group of patients and especially for the care taken with would-be parents with particular problems and those who were rejected by other fertility clinics.

The Lister has a consistent track record with success rates improving every year, particularly since the introduction of the blastocyst procedure where embryos are given more time to mature before implantation.

"We do not go out to select particular types or ages of patient," said Clinical Director, Mr Sam Abdalla.

"It is a tragedy that so many couples are denied treatment around the country. We try to help everyone who needs help; we treat many people with a poor prognosis and we ensure every would-be parent has as much information as possible about their chances of becoming pregnant."

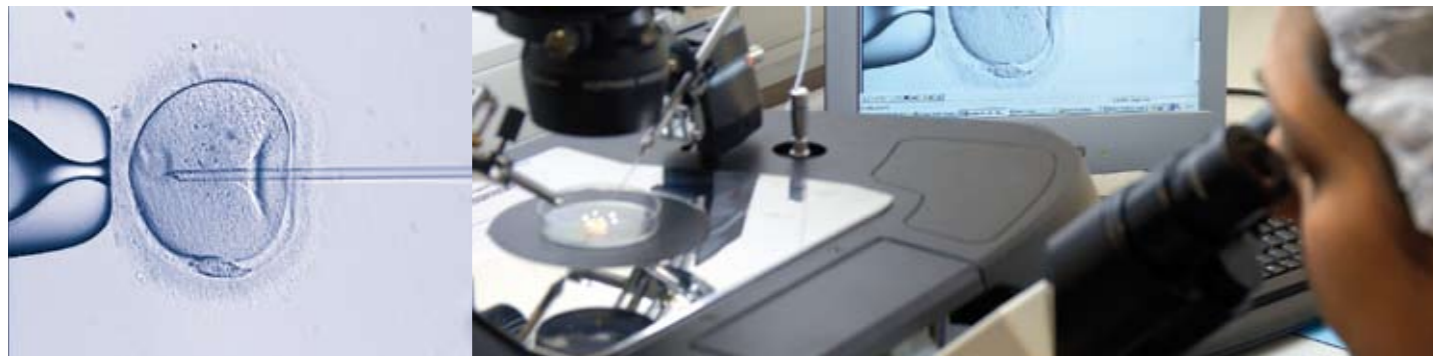
"We are now among the clinics with the highest success rates despite the fact that we also have among the lowest

number of embryo transfers as we try to reduce the number of multiple births," said Mr Abdalla.

The Clinic will be gradually increasing the number of cycles it treats to around 3,000 per year over the coming years and this will be partly enabled by the building of a new embryology laboratory.

"Our new laboratory is double the size of our old one and it exceeds all the provisions of the new European Tissue Directive," said Mr Abdalla. "It enables us to make full use of the new methods that are available to us and to improve the service we give to our patients."

The final phase of the Fertility Clinic expansion is due for completion in mid-April.



The new foot and ankle team is welcomed to The Lister Hospital by James Barr, Hospital Director

Major expansion of foot and ankle medicine

The foot and ankle service at The Lister Hospital is undergoing a major expansion with a specialist surgical unit having been established in order to expand the range of treatments available for patients.

With some of the country's top surgeons available every weekday to meet the increasing demand for foot and ankle surgery, ranging from cartilage transplants to toe joint replacement, the new surgical team also plans to develop research programmes into new treatments, and offer seminars and courses on specific disorders.

The new Clinic for Foot & Ankle Surgery was founded by James Calder and Peter Rosenfeld. Mr Rosenfeld, who is also a consultant at St Mary's Hospital, said the intention was to develop a world-class centre of excellence.

"We looked at the range of venues available and chose The Lister since it shares the same philosophy and pursuit of excellence, supported by some of London's best radiologists and highly professional operating theatre staff," said Mr Rosenfeld. "With the new Enhanced Care Unit, we can treat patients needing complex surgery even though they may have co-morbidities."

Ioan Tudur Jones, consultant at Guy's & St Thomas' Hospital, is the most recent recruit to the Clinic. "This is a superb foot and ankle unit, serving the local community and beyond, and there is no condition affecting the foot and ankle that we cannot treat," he said.

James Calder, who is also a consultant at Imperial College, said he and his colleagues were keen to make the most of the 'knowledge' coming out of the unit. "Given the excellent facilities we have got here and the continuity of seeing patients right through their treatment, we are planning on developing some medium- and long-term research projects," he said.

Peter Rosenfeld said the team were already seeing more 'weekend sportsmen' with injuries such as stress fractures or ruptured Achilles tendons. "People get injured simply trying to get fit and keep fit. Modern techniques of surgery and accelerated rehabilitation have transformed the recovery from foot and ankle injuries. But it is so important to see injuries early and confirm the diagnosis," he said.

For more information on The Clinic for Foot & Ankle Surgery, please see the enclosed insert or call 0845 643 4553 or email info@cfas-uk.com.



Pre-assessment brings dividends

Pre-assessment of patients awaiting orthopaedic surgery at The Lister has reduced cancellations and further improved safety, allowing the admission of more complex cases and further increasing safety for patients.

As many orthopaedic patients as possible are now assessed around 10 days before admission and given a thorough medical history check, as well as having blood pressure, ECG, MRSA and, if necessary, a chest X-ray and blood tests. In addition, people with mobility problems are also assessed by a physiotherapist.

"This is a very important process and it helps us all give a better service to patients," said consultant orthopaedic surgeon, Mr Warwick Radford. "This also helps us to avoid getting things wrong; it is much safer and it is especially important when we have elderly patients booked in for complex joint replacement surgery, for example."

"Pre-assessment gives us time to ensure that every patient is well enough for their operation and it is better for everyone when we avoid cancelling operations. We have had very, very few infections over the years and this system makes a problem even more unlikely," he said.



New facilities for easy access

Patients and visitors in wheelchairs and those who have particular difficulty climbing stairs now have new access to the main reception of The Lister.

A large part of The Lister Hospital building is listed and, following discussions with the planning authorities, approval was given to install extensive new entrance facilities including a ramp system to allow wheelchair access to reception.

The scheme has recently been completed at a cost of almost £60,000.



Lister gynae surgeon's new book for cancer patients

One of The Lister's best known surgeons, Mr Richard Smith, has just published a new book for patients on living with cancer.

Called 'Women's Cancers: Pathways to Healing', Mr Smith's book provides women who have just been told they have cancer, with a wealth of information on orthodox treatments and complementary therapies.

Richard Smith has recently won major recognition in the US for the radical trachelectomy, a fertility sparing and cancer removing surgical procedure for women with cervical cancer which he developed with fellow surgeon Guiseppe Del Priore.

"When you tell most women that they have got cancer they instantly presume that they are either pre-terminal or dying but in truth I have only seen one patient like that in the last 16 years," said Mr Smith.

"Apart from providing accurate information for patients, part of the idea of the book is to help patients get into a positive emotional state so that they live with their diagnosis and their disease but they live well with it," he said.

Women's Cancers: Pathways to Healing by J.Richard Smith and Guiseppe Del Priore is published by Springer.



Mr Richard Smith

New Enhanced Care Unit

The new Enhanced Care Unit at The Lister Hospital has opened with a team of five consultant intensivists on duty 24/7. The majority of patients being cared for in the level 1 two-bed unit are orthopaedic cases with special needs and the remainder are general medical.

Consultant intensivist Dr Jonathan Handy leads the ECU team: "I am delighted that the careful preparation has now allowed us to formally open this new Enhanced Care Unit. It helps to build up confidence among our extensive team of surgeons and our referrers and of course it increases safety for the patients," he said.

"It means that we can take on more complex situations and certainly, if we have, for example, an elderly orthopaedic patient with a co-morbidity such as a cardiac condition or an endocrine problem, there is far less risk of having to transfer the patient to a sister hospital that has an ICU or HDU," said Dr Handy.

"We have an excellent nursing team and we are also training more nurses in order to expand the team. The Lister has a focus on safety and we have developed a trigger threshold protocol that alerts us to the need for high dependency care for a particular patient at an early stage," he said. "This is a very important development for The Lister."

Lister growth on target

At a time when many private hospitals are said to be suffering in the recession, the growth in patient numbers at The Lister is being maintained and the hospital has met its financial targets for the first time for several years.

Hospital Director James Barr said the growth was a direct result of the huge new investment in The Lister by its parent, HCA International, and the support and encouragement of community GPs and the consultants practising at The Lister.

"Our doctors have helped us to secure major investment in the hospital and together with our staff have helped to provide a better service for patients," he said. "We have seen a major growth in orthopaedic procedures and more complex surgery for example. We have changed the way we welcome patients and helped them to gain faster access to our consultants and we have expanded or introduced new and complementary areas of medicine – for example the endoscopy suite and cardiology.

"Our patient satisfaction returns are showing a major improvement and that has to be partly due to the recruitment of new staff and more training and

there is much greater teamwork here," said Mr Barr. "We are not complacent, however. We know there is always room for improvement and I thank everyone, from patients and their GPs, to our consultants, nurses and admin staff for the continuing efforts they are making towards our success."




THE LISTER HOSPITAL
chelsea

Chelsea Bridge Road
London SW1W 8RH

t: 020 7730 7733

f: 020 7824 8867

e: info@lister.hcahealthcare.co.uk

w: thelisterhospital.com

For any enquiries please contact
GP liaison on 020 7881 4000.